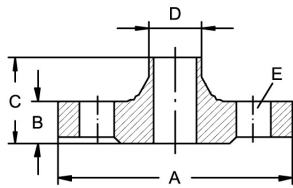


Welding neck flanges EN 1092-1

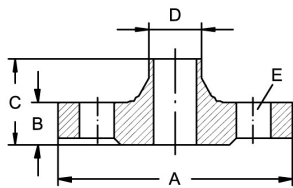
Art.No EUR Art.No EUR

Welding neck flange, DIN 2633, ND 16



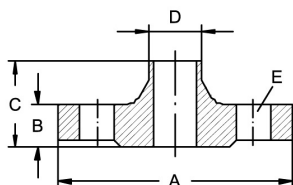
| DN | A | B | C | D | E | AISI316L-1.4435 | AISI316Ti-1.4571 |
|-----|-----|----|----|-----------|-----------|-----------------|------------------|
| 10 | 90 | 14 | 35 | 17,2x1,8 | 4xM12x55 | 467630 | Enquiry 465030 |
| 15 | 95 | 14 | 35 | 21,3x2 | 4xM12x55 | 467631 | Enquiry 465031 |
| 20 | 105 | 16 | 38 | 26,9x2,3 | 4xM12x55 | 467632 | Enquiry 465032 |
| 25 | 115 | 16 | 38 | 33,7x2,6 | 4xM12x55 | 467633 | Enquiry 465033 |
| 32 | 140 | 16 | 40 | 42,4x2,6 | 4xM16x65 | 467634 | Enquiry 465034 |
| 40 | 150 | 16 | 42 | 48,3x2,6 | 4xM16x65 | 467635 | Enquiry 465035 |
| 50 | 165 | 18 | 45 | 60,3x2,9 | 4xM16x65 | 467636 | Enquiry 465036 |
| 65 | 185 | 18 | 45 | 76,1x2,9 | 4xM16x65 | 467637 | Enquiry 465037 |
| 80 | 200 | 20 | 50 | 88,9x3,2 | 8xM16x75 | 467638 | Enquiry 465038 |
| 100 | 220 | 20 | 52 | 114,3x3,6 | 8xM16x75 | 467639 | Enquiry 465039 |
| 125 | 250 | 22 | 55 | 139,7x4 | 8xM16x75 | 467641 | Enquiry 465041 |
| 150 | 285 | 22 | 55 | 168,3x4,5 | 8xM20x80 | 467642 | Enquiry 465042 |
| 200 | 340 | 24 | 62 | 219,1x5,9 | 12xM20x80 | 467644 | Enquiry 465044 |
| 250 | 405 | 26 | 70 | 273x6,3 | 12xM24x90 | 467646 | Enquiry 465046 |
| 300 | 460 | 28 | 78 | 323,9x7,1 | 12xM24x90 | 467648 | Enquiry 465048 |

Welding neck flange DIN 2633 + EN 10357 (DIN 11850) ND 16



| DN | A | B | C | D | E | AISI316L-1.4404 |
|-----|-----|----|----|--------|-----------|-----------------|
| 15 | 95 | 14 | 35 | 19x1,5 | 4xM12x55 | 465531 |
| 20 | 105 | 16 | 38 | 23x1,5 | 4xM12x55 | 465532 |
| 25 | 115 | 16 | 38 | 29x1,5 | 4xM12x55 | 465533 |
| 32 | 140 | 16 | 40 | 35x1,5 | 4xM16x65 | 465534 |
| 40 | 150 | 16 | 42 | 41x1,5 | 4xM16x65 | 465535 |
| 50 | 165 | 18 | 45 | 53x1,5 | 4xM16x65 | 465536 |
| 65 | 185 | 18 | 45 | 70x2 | 4xM16x65 | 465537 |
| 80 | 200 | 20 | 50 | 85x2 | 8xM16x75 | 465538 |
| 100 | 220 | 20 | 52 | 104x2 | 8xM16x75 | 465539 |
| 125 | 250 | 22 | 55 | 129x2 | 8xM16x75 | 465541 |
| 150 | 285 | 22 | 55 | 154x2 | 8xM20x80 | 465542 |
| 200 | 340 | 24 | 62 | 204x2 | 12xM20x80 | 465544 |

Welding neck flange, DIN 2634, ND 25



| DN | A | B | C | D | E | AISI316L-1.4435 | AISI316Ti-1.4571 |
|-----|-----|----|-----|-----------|------------|-----------------|------------------|
| 200 | 360 | 30 | 80 | 219,1x6,3 | 12xM24x90 | 467744 | Enquiry 465244 |
| 250 | 425 | 32 | 88 | 273x7,1 | 12xM27x110 | 467746 | Enquiry 465246 |
| 300 | 485 | 34 | 92 | 323,9x8 | 16xM27x110 | 467748 | Enquiry 465248 |
| 350 | 555 | 38 | 100 | 355,6x8 | 16xM30x120 | 467701 | Enquiry 465201 |
| 400 | 620 | 40 | 110 | 406,4x8,8 | 16xM33x130 | 467702 | Enquiry 465202 |
| 500 | 730 | 45 | 125 | 508x10 | 20xM33x130 | 467703 | Enquiry 465203 |

10 - 150 Use flanges ND 40.